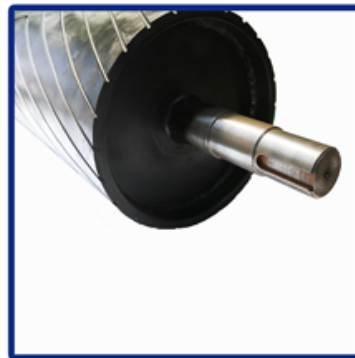
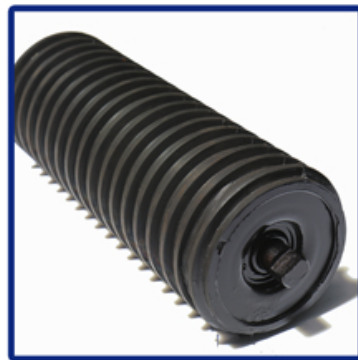
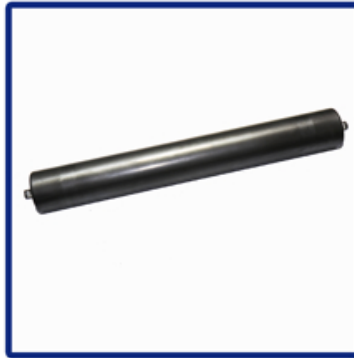
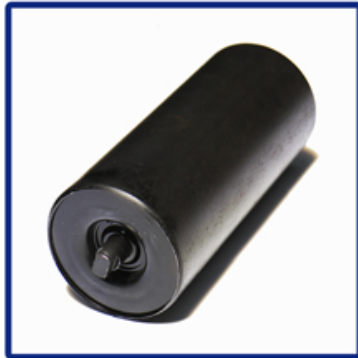
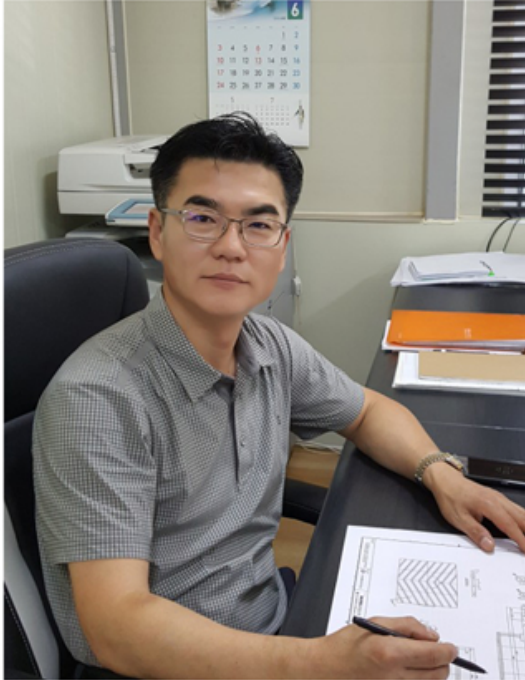




(주)아피스롤테크

A. 부산광역시 사상구 낙동대로 1348번길 17
T. (051) 304-8500~2
F. (051) 304-8503
E. apisroll@naver.com



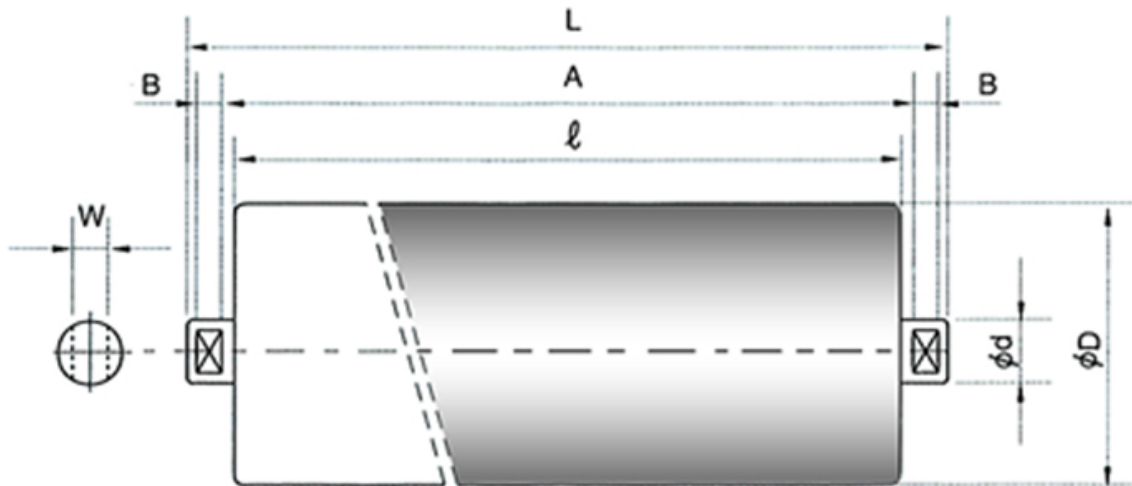


컨베이어 롤러 물류 시스템의 특징은
전력 효율 향상, 온실 가스 배출감소, 물류 비용 감소, 생산성 확대와
작업효율성 향상의 이점을 가져옵니다.

(주)아피스 롤테크의 컨베이어 롤러제품은
이 점을 충분히 고려하여 고객이 원하는 재질을
선정, 연마, 기계가공 하여
장기간 축적된 기술로 생산되는 제품의 기능을 보증합니다.

(주)아피스 롤테크의 제품 신뢰성과 다양성으로
길이별, 현장 용도별로 귀사의 원가절감에 도움이 되도록 하며
도면사양에 따른 기계가공품을 공급하여 드리겠습니다.

(주)아피스 롤테크 대표이사 전명석

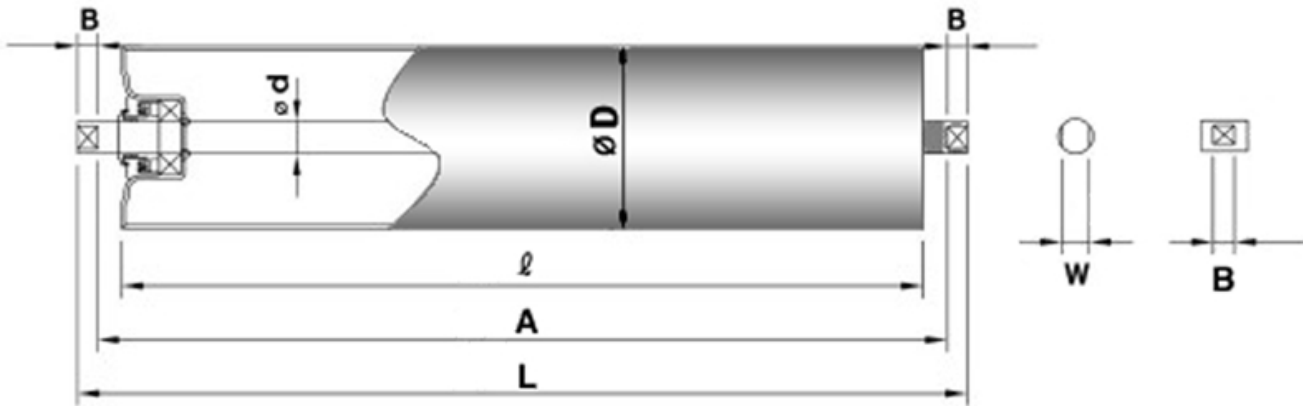


Carrier roller 캐리어롤러

unit=mm

belt width	dimension								bearing No.	weight (kg)	
	ØD	Ød	l	L	A	B	B ₁	W			
400	89.1	20	145	175	153	8	11	14	6204zz	2.08	
450			165	195	173					2.3	
500			180	210	188					2.5	
600			210	240	218					2.7	
650			230	260	238					2.9	
700			250	280	258					3.2	
750			265	295	273					3.9	
800	114.3	20	280	310	288	8	11	14	6204zz	4.1	
900			315	345	323					4.4	
1000			345	375	353					4.8	
1050	139.8	25	370	410	380	11	15	18	6205zz	6.7	
1100			385	425	395					6.9	
1200			420	460	430					7.5	
1300			460	500	470					8.3	
1400	165.2	30	500	540	510	11	15	22	6206zz	11.1	
1500			540	580	550					12.3	
1600			580	620	590					14.1	
1800		35	650	690	660			25		6207zz	17.1
2000			730	770	740						18.9
2200	40	800	840	810	31	6208zz	22.2				

*상기 제품은 L 규격만 정해주시면 신속히 제작됩니다.

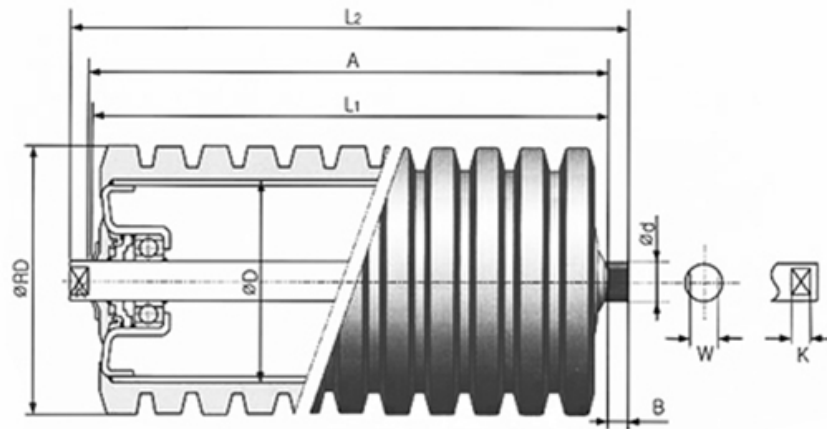


Return roller 리턴롤러

unit=mm

belt width	dimension								bearing No.	weight (kg)
	ØD	Ød	ℓ	L	A	B	B ₁	W		
400	89.1	20	460	505	480	8	12.5	14	6204zz	5.1
450			510	555	530					5.6
500			560	605	580					6.1
600			660	705	680					6.9
650			710	755	730					7.2
700			760	805	780					7.8
750			850	905	880					11.2
800	114.3	20	900	955	930	8	12.5	14	6204zz	11.7
900			1000	1055	1030					12.1
1000			1100	1155	1130					13.2
1050	139.8	25	1150	1215	1180	11	17.5	18	6205zz	17.9
1100			1200	1265	1230					18.5
1200			1300	1365	1330					20.1
1300			1400	1465	1430					22.6
1400	165.2	30	1510	1585	1550	11	17.5	22	6206zz	29.1
1500			1610	1685	1650					31.1
1600			1710	1785	1750					32.3
1800		35	2000	2075	2040			25	6207zz	49.8
2000			2200	2275	2240					54.2
2200	40	2400	2475	2440	31	6208zz	66.2			

*상기 제품은 L 규격만 정해주시면 신속히 제작됩니다.

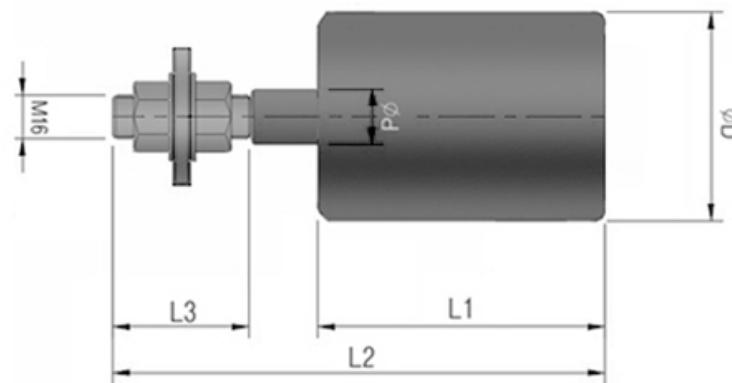


Impact roller 임팩트롤러

unit=mm

belt width	dimension									bearing No.
	ØRD	ØD	Ød	L1	L2	A	K	B	W	
400	90	76.3	20	145	175	153	8	11	14	6204zz
450				165	195	173				
500				180	210	188				
600				210	240	218				
750	115	89.1	25	265	295	273	11.2	15	18	6205zz
900				315	345	323				
1050				370	410	380				
1200	140	114.3	30	420	460	430	11.2	15	22.4	6206zz
1400				500	540	510				
1600				580	620	590				
1800				650	690	660				
2000	166	139.8	35	730	770	740	11.2	15	25	6207zz

*상기 제품은 L규격만 정해주시면 신속히 제작됩니다.



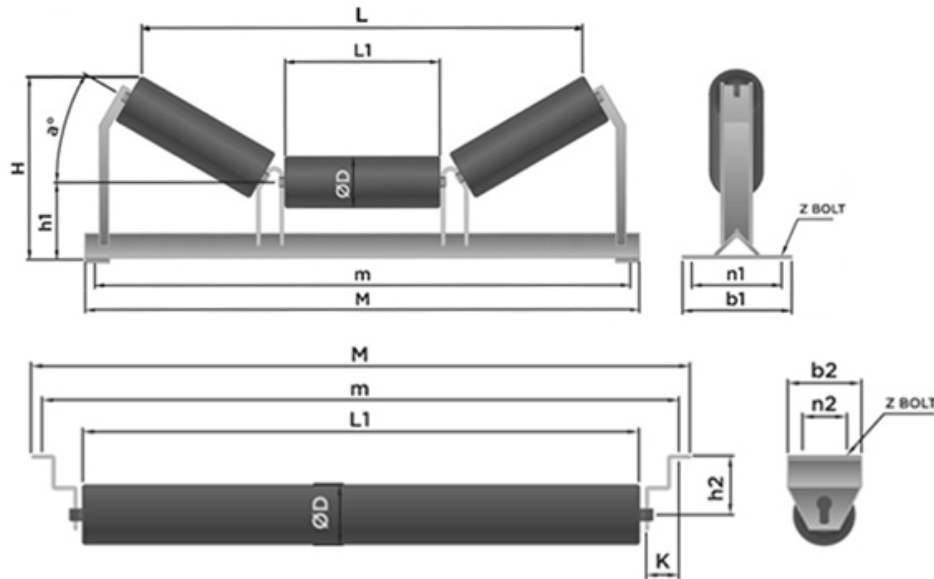
Guide roller 가이드롤러

unit=mm

belt width	dimension						bearing No.	weight (kg)
	ØD	Ød	L1	L2	L3	M		
400W~500W	60.5	20	120	195	50	M16	6204zz	1.8
600W~900W	76.3		120	195	50			2.0
1050-2400	89.1		120	195	50			2.3

*규격 외 품목은 주문제작 가능합니다.

재료를 운반하는 컨베이어 섹션의 벨트를 지지합니다. 평평하거나 20도, 30도 및 45도의 각거나 다른 길이의 roll 유형입니다.



return측 belt의 자중만을 지지하며 한개의 return roller로 구성되어 있습니다.

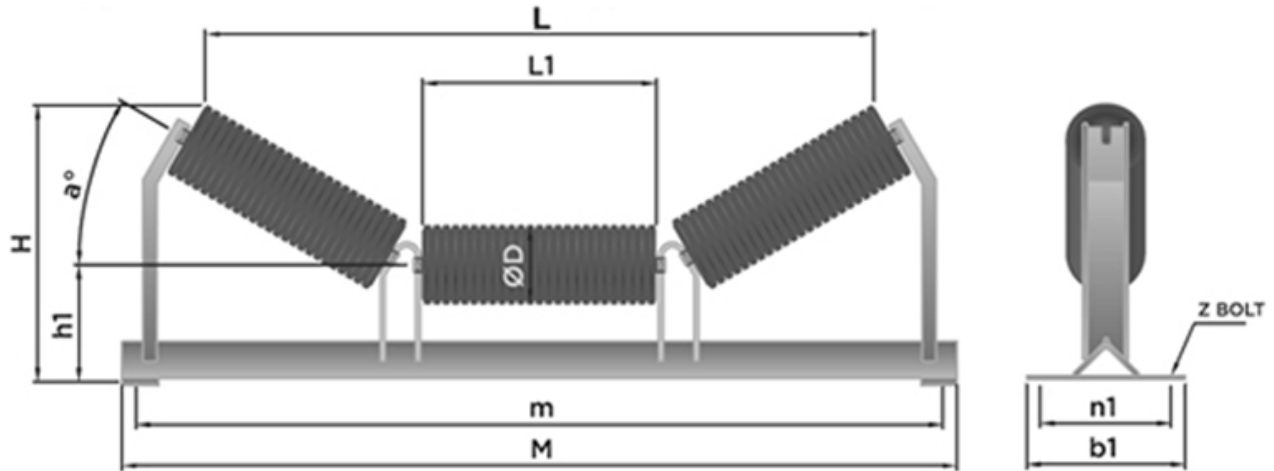
Carrying&Return Idler 캐링&리턴 아이들러

unit=mm

belt width	dimension												BOLT	Angle	total weight (kg)	
	ØD	L ₁	M	m	h ₁	n ₁	b ₁	H			L					
								20°	30°	45°	20°	30°				45°
400	89.1	145	690	640	125	140	190	225	235	275	470	435	365	M12	L50×T6	12.9
450		165	740	690				230	245	290	525	490	415			13.7
500		180	790	740				235	250	300	570	535	450			15.4
600	114.3	210	890	840	140	150	200	260	280	340	660	615	530	M12	L65×T6	18.9
750		265	1090	1040				320	325	395	810	750	645			20.5
900		315	1240	1190				320	345	430	950	890	765			25.4
1050	139.8	370	1390	1340	180	180	230	385	411	515	1140	1055	910	M12	L75×T6	28.3
1200		420	1540	1490				400	435	550	1280	1195	1030			43.7
1400		500	1790	1730				510	550	690	1515	1435	1235			47.7
1600	165.2	580	1990	1930	250	280	340	540	585	750	1745	1650	1430	M16	L90×T7	84.9
1800		650	2280	2220				590	645	830	1950	1825	1605			93.5
2000		730	2480	2420				620	680	885	2180	2040	1800			130.3
2200	800	2680	2620	300	330	390	665	730	955	2380	2235	1970	M20	L100×T10	142.8	
																165.3

belt width	dimension										BOLT	total weight (kg)		
	D			L ₁	M	n	h ₂	n ₂	b ₂	K		Plain	Disc	Spiral
	Plain	Disc	Spiral											
400	89.1	90	90.3	460	690	640	110	60	120	80	M12	7.2	9.0	11.8
450				510	740	690						7.5	9.2	12.1
500				560	790	740						7.9	9.8	12.8
600	114.3	115	115.1	660	890	840	130	100	170	90	M16	8.6	10.6	13.9
750				850	1090	1040						11.0	13.0	17.2
900				1000	1240	1190						13.1	15.7	20.9
1050	139.8	140	140.3	1150	1390	1340	160	120	200	90	M16	14.6	16.9	22.7
1200				1300	1540	1490						23.3	29.0	35.7
1400				1510	1790	1730						25.3	31.2	38.7
1600	165.2	166	165.8	1710	1990	1930	180	150	230	90	M20	35.6	45.0	55.4
1800				2000	2280	2220						39.0	48.8	61.0
2000				2200	2480	2420						48.8	60.9	72.2
2200	2400	2680	2620	52.6	65.6	77.9								
												68.0	82.0	95.4

*상기 규격 외 주문제작 가능합니다. (CEMA, DIN 규격가능)



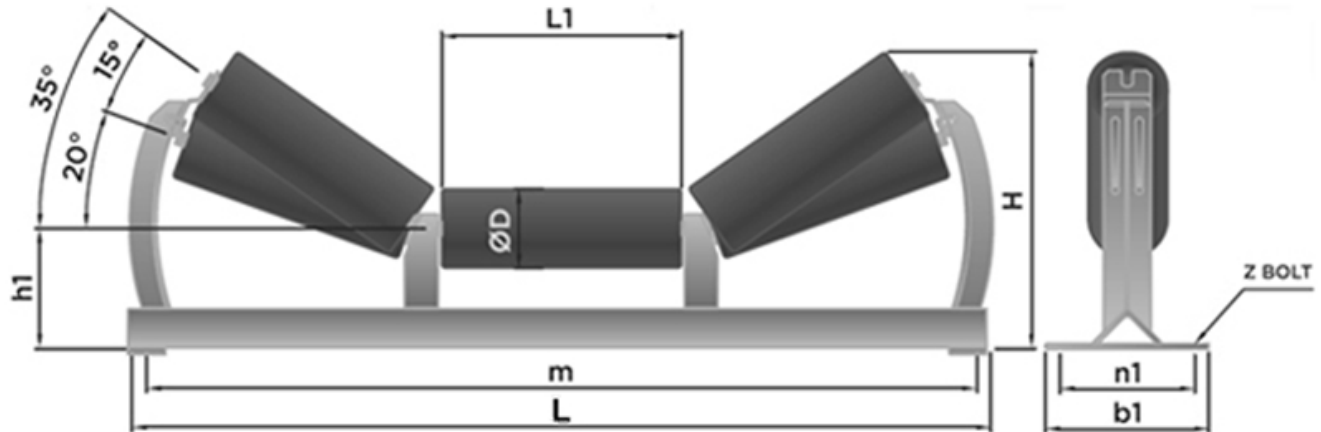
적재 지점에서 충격을 흡수하여 벨트 및 롤러를 보호하며, 특히 특히 큰 덩어리와 무거운 물질이 운반 될 때 사용됩니다.

Impact Idler 임팩트 아이들러

unit=mm

belt width	dimension													total weight (kg)		
	$\varnothing D$	L_1	M	m	h_1	n_1	b_1	H			L				Z	Angle
								20°	30°	45°	20°	30°	45°			
400	90	145	690	640	125	140	190	225	235	275	470	435	365	M12	L50×T6	14.7
450		165	740	690				230	245	290	525	490	415			15.8
500		180	790	740				235	250	300	570	535	450			16.6
600	115	210	890	840	140	150	200	260	280	340	660	615	530	M12	L65×T6	20.8
								280	305	360	650	620	560			21.7
750	115	265	1090	1040	150	160	210	320	325	395	810	750	645	M12	L75×T6	23.5
900								320	345	430	950	890	765			28.8
1050	140	370	1390	1340	180	180	230	385	411	515	1140	1055	910	M12	L90×T7	33.2
1200								400	435	550	1280	1195	1030			50.9
1400	166	500	1790	1730	250	280	340	510	550	690	1515	1435	1235	M16	L100×T10	55.8
1600								540	585	750	1745	1650	1430			97.2
1800								590	645	830	1950	1825	1605			106.8
2000	166	730	2480	2420	280	330	390	620	680	885	2180	2040	1800	M16	L130×T12	145.7
2200								665	730	955	2380	2235	1970			M20

*상기 규격 외 주문제작 가능합니다. (CEMA, DIN 규격가능)



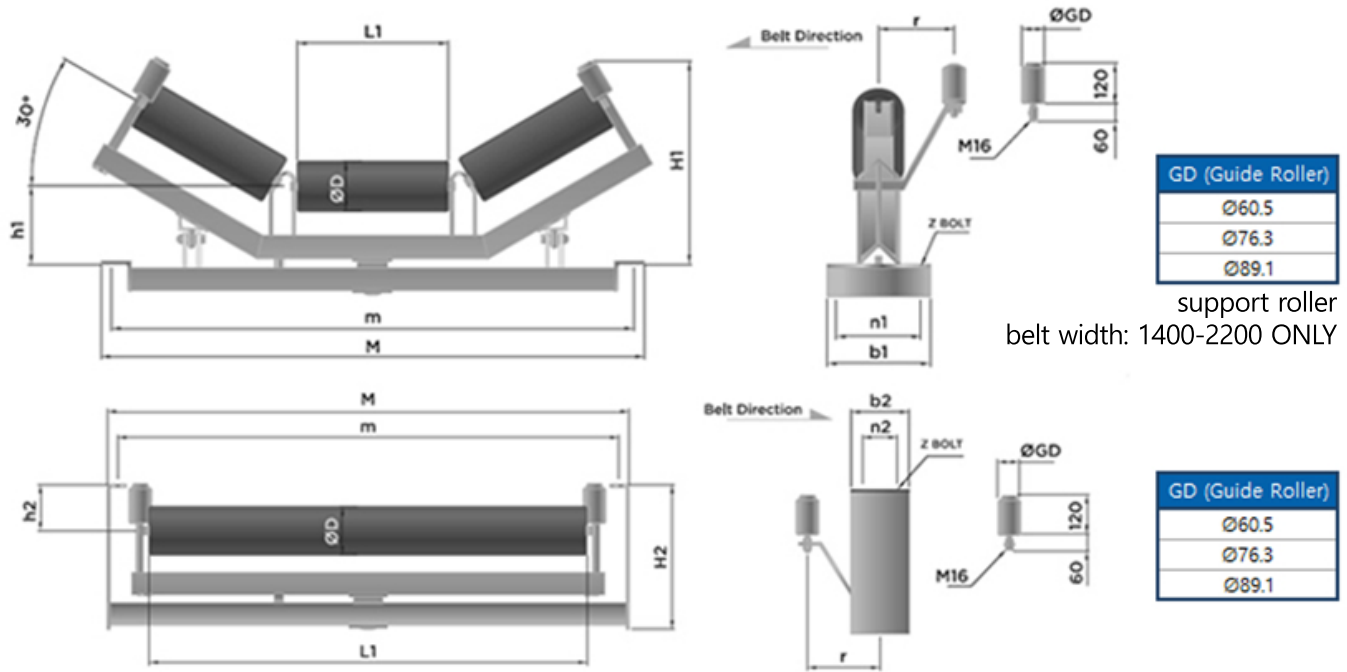
3개의 roller로 이루어져 있으며 through angle을 5°~25° 이내에서 belt의 transition따라 맞추어 사용할 수 있습니다.

Transition Idler 트랜지션 아이들러

unit=mm

belt width	dimension										total weight (kg)	
	ØD	L ₁	L	m	h ₁	n ₁	b ₁	H		Z		Angle
								5°~20°	20°~30°			
400	89.1	145	690	640	125	140	190	225	470	M12	L50×T6	15.2
450		165	740	690				230	525			16.1
500		180	790	740				235	570			16.8
600	114.3	210	890	840	140	150	200	260	660	M12	L65×T6	19.8
								280	650			25.0
750	114.3	265	1090	1040	150	160	210	320	810	M12	L75×T6	26.2
900		315	1240	1190				320	950			29.7
1050	139.8	370	1390	1340	180	180	230	385	1140	M12	L90×T7	40.2
1200		420	1540	1490				400	1280			52.4
1400	165.2	500	1790	1730	250	280	340	510	1515	M16	L100×T10	77.5
1600		580	1990	1930				540	1745			99.2
1800		650	2280	2220	280	330	390	590	1950			M16
2000	730	2480	2420	620				2180	134.4			
2200	800	2680	2620	300			665	2380	M20		167.5	

*상기 규격 외 주문제작 가능합니다. (CEMA, DIN 규격가능)



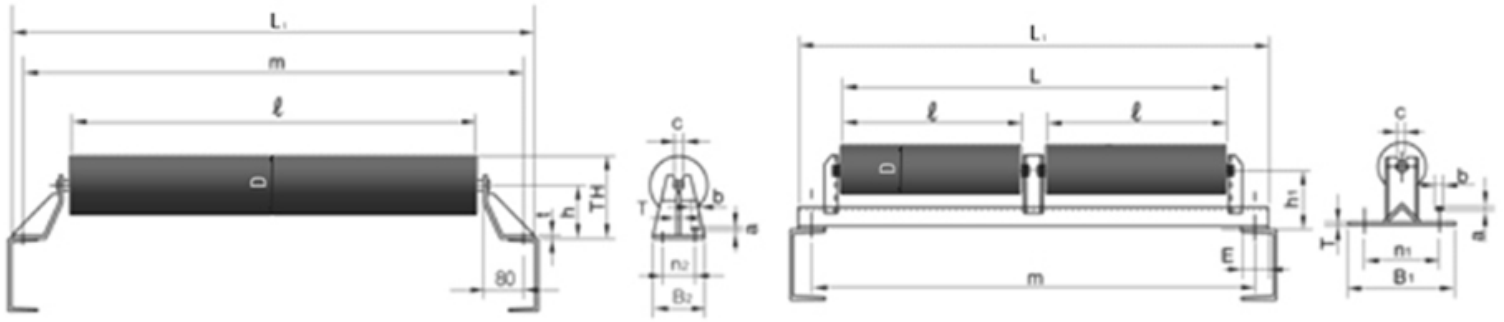
Self-Aligning Carrying & Return Idler

unit=mm

belt width	dimension										total weight (kg)
	ØD	L ₁	H ₁	M	m	h ₁	n ₁	b ₁	r	Z	
400	89.1	145	345	690	640	135	140	190	150	M12	28.7
450		165	352	740	690						29.7
500		180	362	790	740						31.3
600	114.3	210	395	890	840	150	150	200	180		36.1
750		265	427	1090	1040	160	160	210			39.5
900		315	449	1240	1190	160	160	210			53.2
1050	139.8	370	474	1390	1340	190	180	230	180	79.4	
1200		420	545	1540	1490					85.1	
1400	165.2	500	570	1790	1730	260	280	340	250	M16	158.5
1600		580	676	1990	1930						178.6
1800		650	709	2280	2220	290	330	390			211.2
2000		730	771	2480	2420	290	330	390		226.9	
2200		800	801	2680	2620	310	330	390		M20	267.2

belt width	dimension										total weight (kg)
	ØD	L ₁	M	m	H ₂	h ₂	n ₂	b ₂	r	Z	
400	89.1	460	690	640	310	100	60	120	150	M12	29.3
450		510	740	690							30.4
500		560	790	740							31.5
600	114.3	660	890	840	320	140	150	180	35.5		
750		850	1090	1040	327				37.1		
900		1000	1240	1190	327				44.5		
1050	139.8	1150	1390	1340	390	120	100	150	180	75.2	
1200		1300	1540	1490						79.7	
1400	165.2	1510	1790	1730	520	150	120	220	250	M16	140.3
1600		1710	1990	1930							152.9
1800		2000	2280	2220	522						186.1
2000		2200	2480	2420	542					199.7	
2200		2400	2680	2620	620					170	150

*상기 규격 외 주문제작 가능합니다. (CEMA, DIN 규격가능)

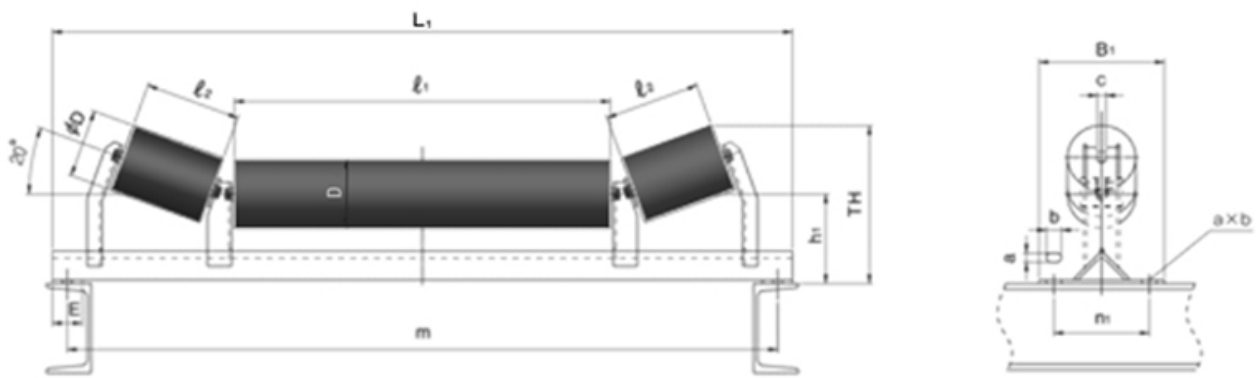


1열&평2열 Carrying Idler

unit=mm

belt width	dimension														weight (kg)					
	D	l	L ₁	m	h	h ₁	TH	n ₁	n ₂	B ₁	B ₂	t	T	C		a×b				
400	89.1	460	690	640	100	125	145	140	60	190	120	4.5	6	14.5	15×25	6.4				
450		510	740	690												140	6.8			
500		560	790	740		150		7.3												
600		660	890	840		200		8.2												
750	114.3	850	1090	1040	120	150	157	160	100	210	170	6	18.5	18.5	19×32	10.4				
900		1000	1240	1190		180	180	190		180						230	170	6	18.5	20.5
1050		1150	1390	1340		120	180	190		180						100	230	170	6	18.5

belt width	dimension											weight (kg)					
	D	l	L ₁	m	h ₁	L	n ₁	B ₁	E	T	C		a×b				
900	114.3	480	1240	1190	150	1000	160	210	50	6	14.5	15×25	30.0				
1050	139.8	550	1390	1340	180	1150	180	230			18.5		33.5				
1200		625	1540	1490		1300			180	230	50	6	18.5	41.5			
1400	165.2	730	1790	1730	250	1510	280	350	65	9	23	19×32	77.0				
1600		830	1990	1930		1710					280		350	65	9	23	89.5
1800		975	2280	2220		2000					330		390	65	9	26	104.0
2000		1075	2480	2420		2200					330		390	65	9	26	130.0



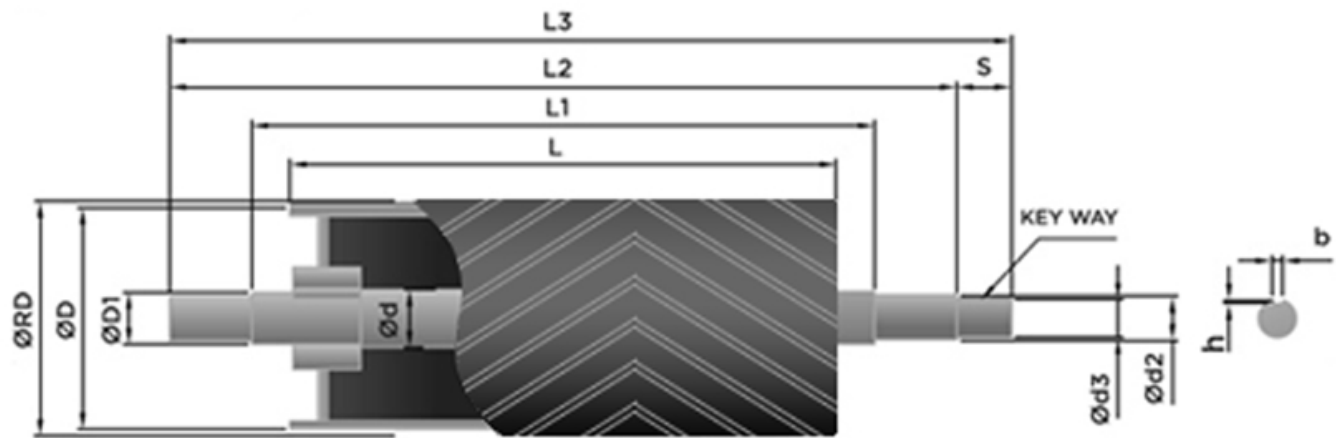
평3열 Carrying Idler

unit=mm

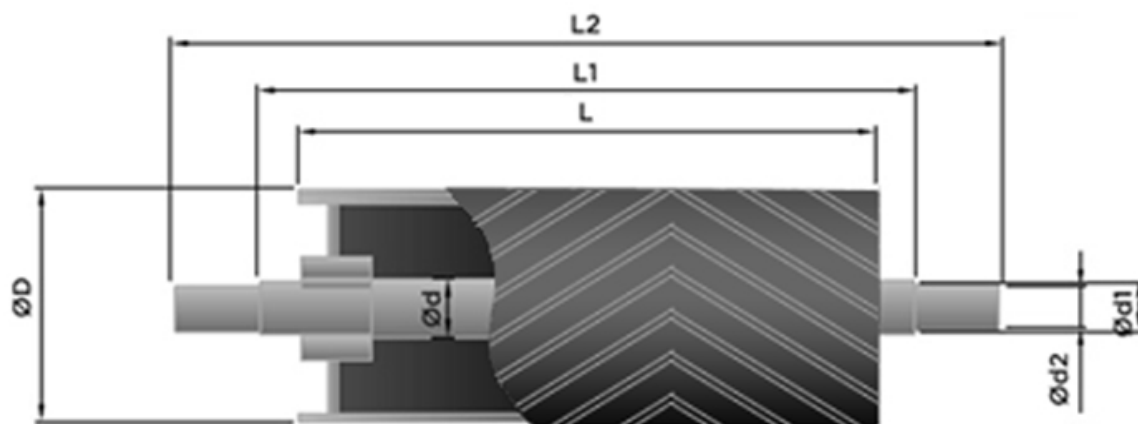
dimension	belt width															
	400	450	500	600	700	750	900	1000	1050	1100	1200	1400	1600	1800	2000	
l ₁	200	250	300	390	490	480	630	730	790	830	940	1100	1340	1550	1790	
l ₂	120						160						200			
TH	215		230		265		310		406		436					

*그외 치수 D, L₁, m, h₁, E, C, n₁, B₁, a×b와 Return Idler는 동일함.

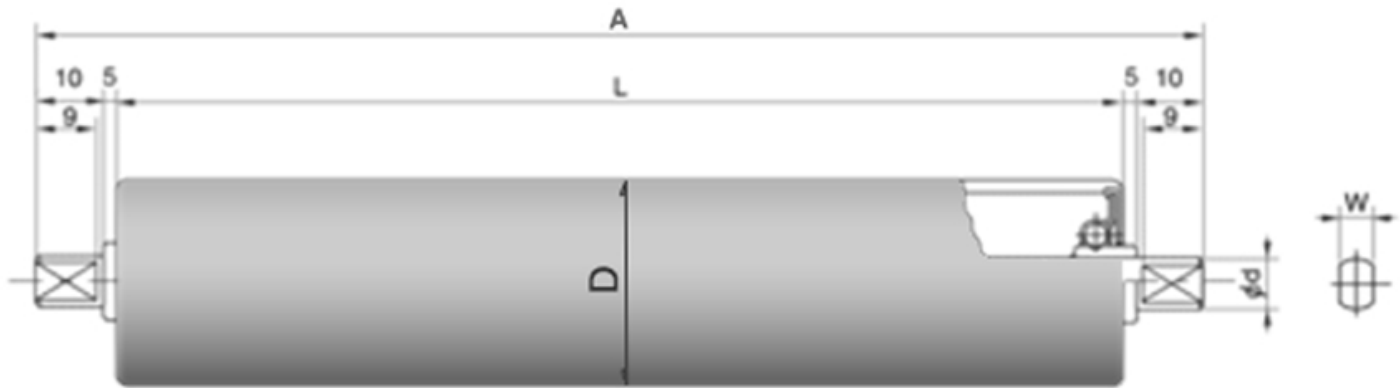
HEAD PULLEY



TAIL PULLEY



*표면처리 : 아연도금. 크롬도금. 고무코팅. 우레탄코팅. 널링



샤프트 가공타입

표준형	TAP	PIN	THREAD(로링)

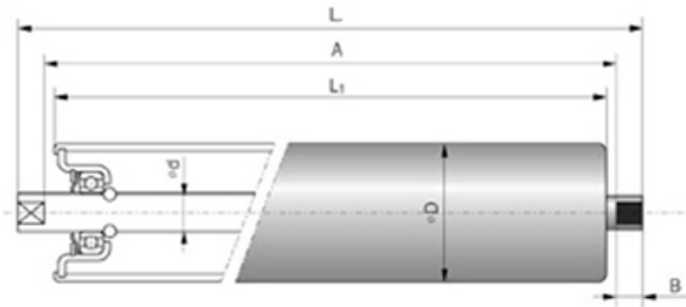
MR roller

unit=mm

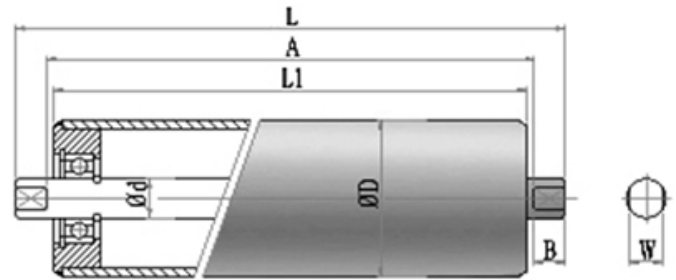
MODEL	D	d	A	W	L	표면처리
MR2301	42(1 1/4")	12	L+30 ^{-0.5}	8	※	백관 및 Zn도금
MR2401	48(1 1/4")					
MR2451	50.8					
MR2501	60(2")	15		8, 12		
MR2502						

*상기 제품은 L 규격만 정해주시면 신속히 제작됩니다.

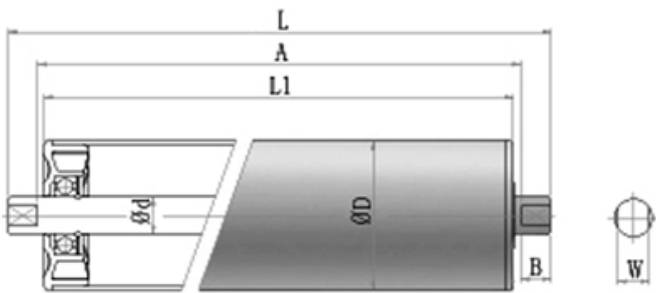
앤드캡 타입



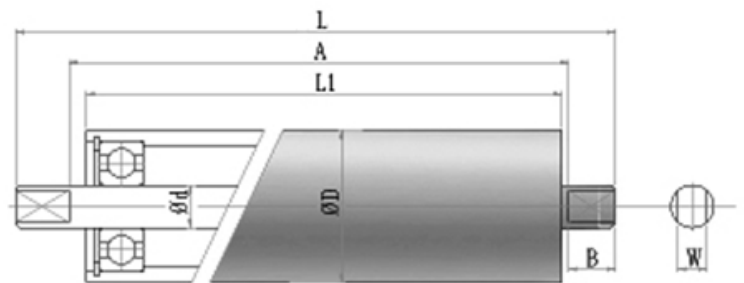
하우징 타입



PH 하우징형



SCH형



샤프트 가공타입

표준형	TAP	PIN	THREAD(로링)

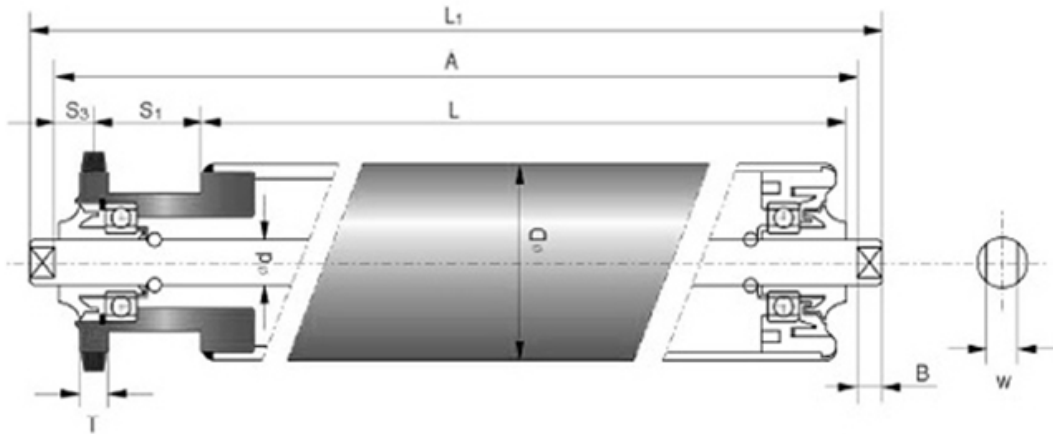
Ball-Bearing roller

unit=mm

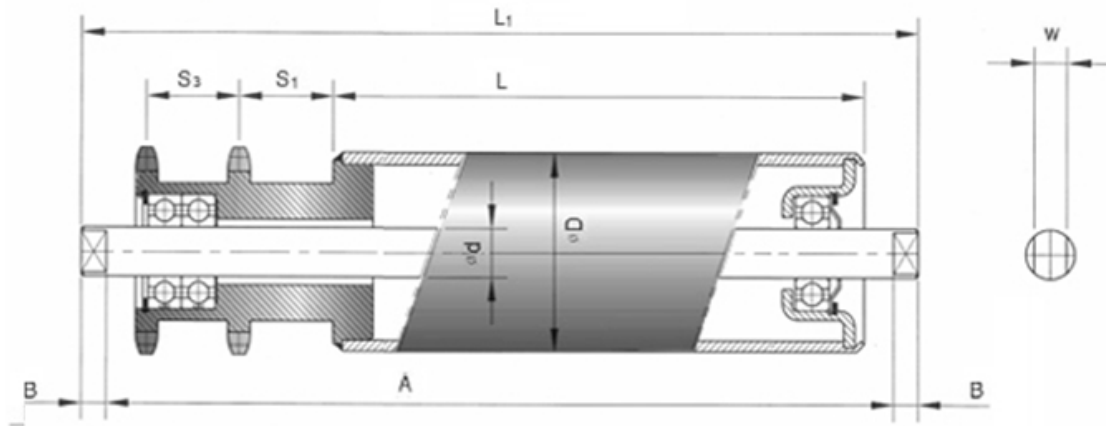
Type	dimension							
	ØD	Ød	L ₁	L	A	B	W	Bearing
일반형	42, 48, 50	12	400	420	404	8	8	6201 ZZ
		15						6202 ZZ
	60	12						6201 ZZ
		15						6202 ZZ
		17						6203 ZZ
PH하우징형	48, 50, 60	12	400	420	404	8	8	6201 ZZ
		15						6002 ZZ
SCH형	21, 27, 34, 42, 60, 89	10~20	별도문의					

*상기 제품은 L₁ 규격만 정해주시면 신속히 제작됩니다.

DR-R(STD)S



DR-R(STD)D



샤프트 가공타입

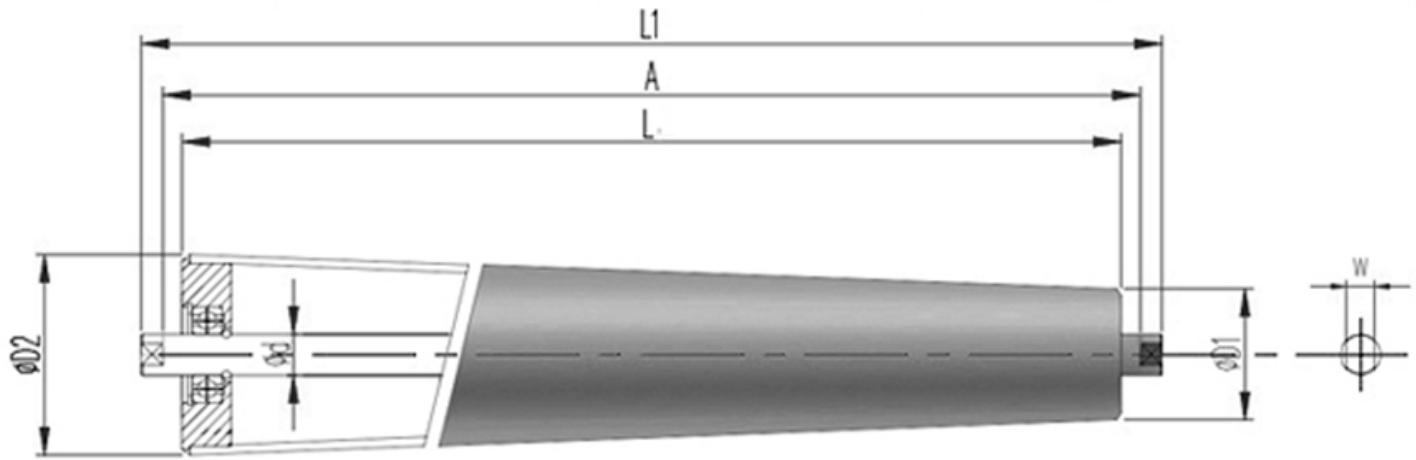
표준형	TAP	PIN	THREAD(로링)

Sprocket roller 스프라켓 롤러

unit=mm

Type	dimension												
	$\varnothing D$	$\varnothing d$	L	L_1	A	B	W	S1	S2	S3	T	RS#	Bearing
SINGLE	42, 48, 50, 60	12	400	454	438	8	8	25	20	9	7.2	40	6002 ZZ
DOUBLE		15		474	458		12						6201 ZZ
SINGLE	76, 89	20		454	438		14						6204 ZZ
DOUBLE				474	458								

*상기 제품은 L 규격만 정해주시면 신속히 제작됩니다.



샤프트 가공타입

표준형	TAP	PIN

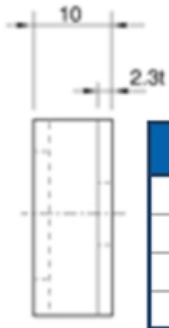
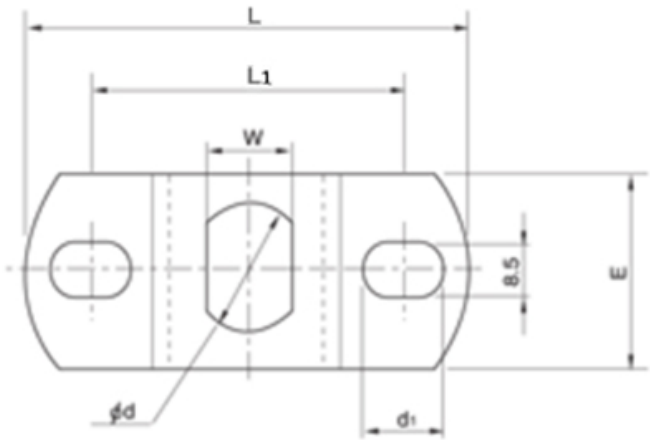
Taper roller 테이퍼 롤러

unit=mm

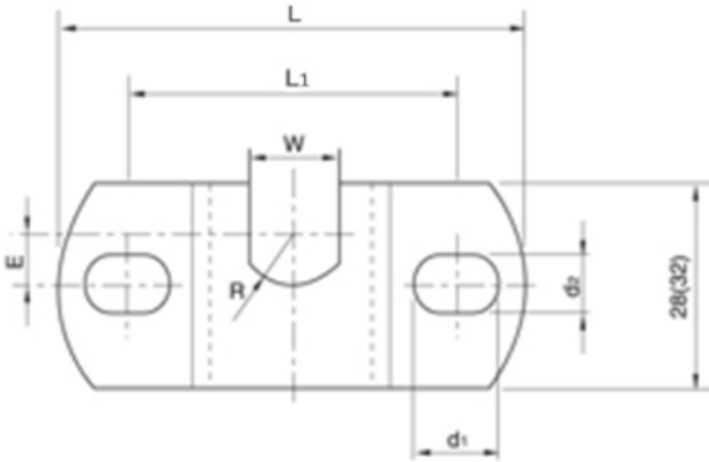
Type	dimension												
	ØD1/ØD2	Ød	L	L ₁	B	W	S1	S2	S3	T	RS#	Bearing	
SINGLE	별도문의	12, 15	400	481	12	8	25	20	9	7.2	40	6002 ZZ	
				501									
SPROCKET형				SINGLE									499
				DOUBLE									519
ACCUM형				SINGLE									448
				DOUBLE									468

*상기 제품은 L 규격만 정해주시면 신속히 제작됩니다.

BRACKET

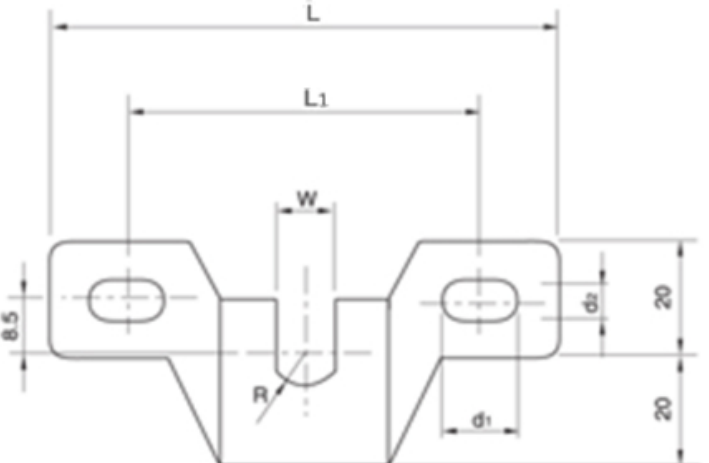


MODEL	L	L ₁	W	E	d	d ₁
SBB2508	60	42	8.2	25	12.1	12
SBB2512			12.2		15.1	
SBB2808	92	66	8.2	28	12.1	16
SBB2812			12.2		15.1	



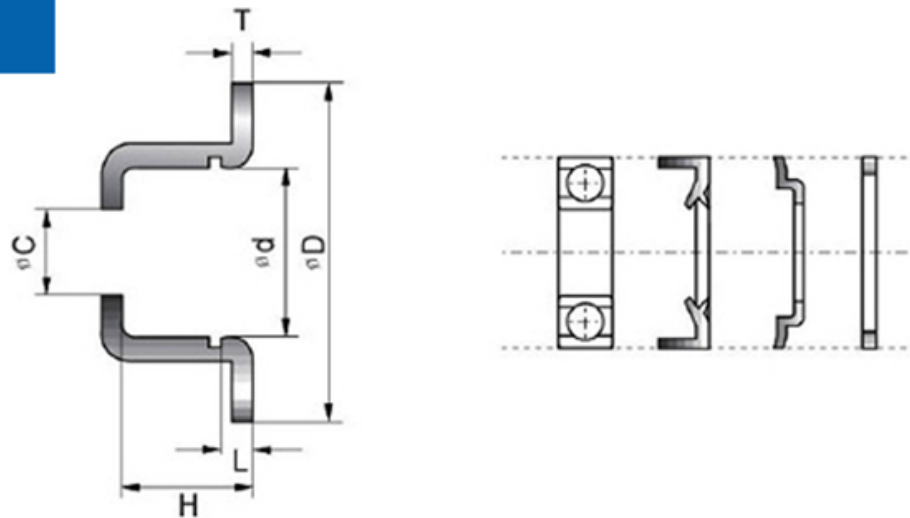
MODEL	L	L ₁	E	R	W	d ₁	d ₂
SBF2508	60	42	7.5	6	8.2	12	8.5
SBF2512				8.5	12.2		
SBF2808	92	66		6	8.2	16	8.5
SBF2812				8.5	12.2		
SBF3214	109	70	10.5	10	14.2	17	10.5

*()치수는 SBF3214 치수임.

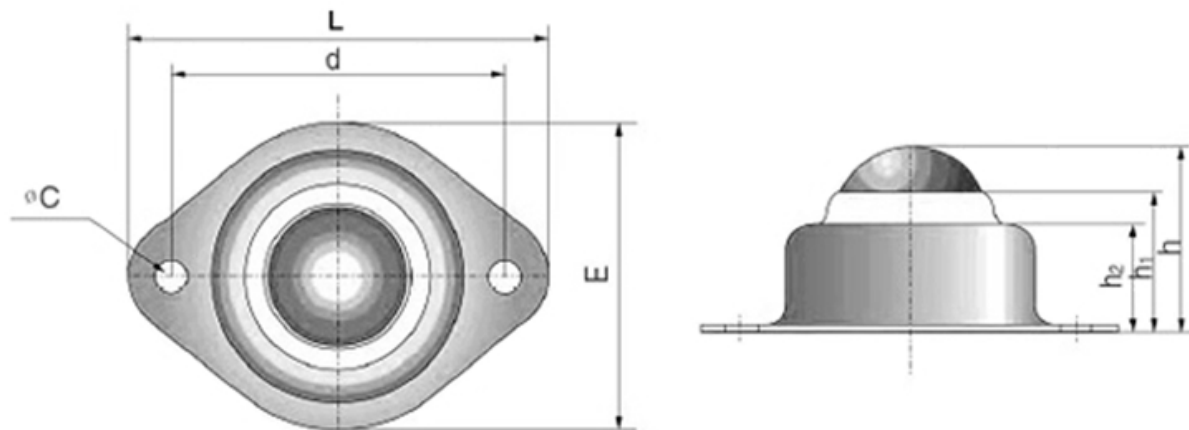


MODEL	L	L ₁	R	W	d	d ₁
SBV4008	96	6	6	8.2	16	8.2
SBV4012			8.5	12.2		

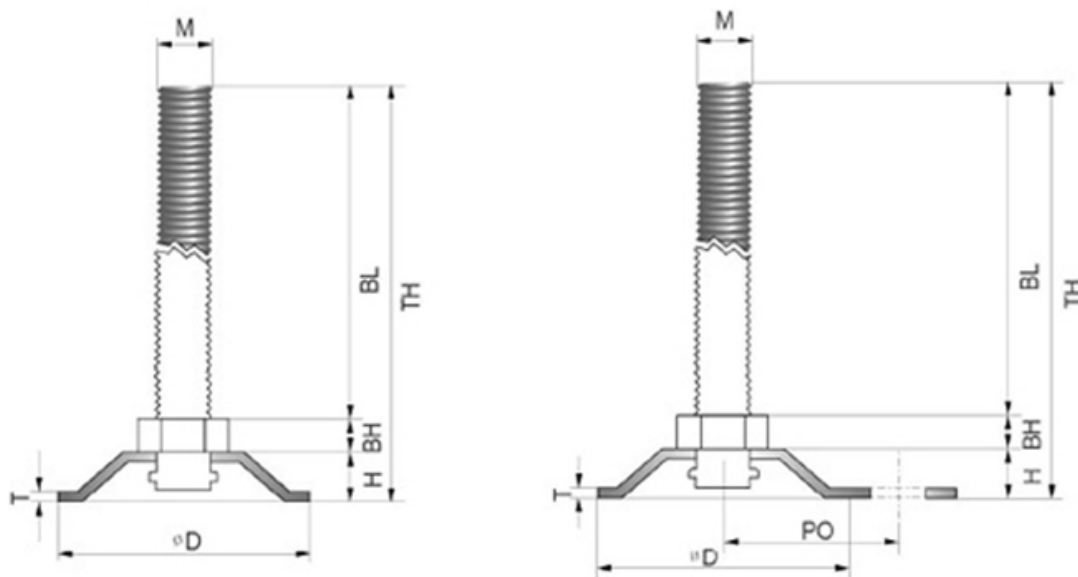
END CAPS



Ball Caster



볼트조절좌







(주)아피스롤테크